



Improving Long Jetty

What you need to know.....

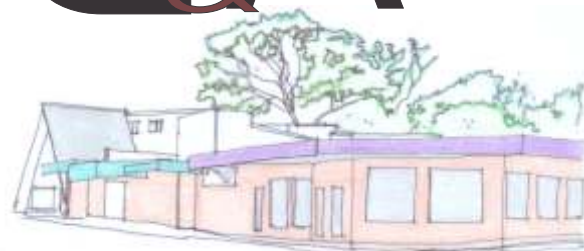
Wyong Shire Council is about to start the first stage of its streetscape improvement project to help enliven the Long Jetty central business district along the Central Coast Highway.

What you need to know.....

Q&A

Q. What will the streetscape improvements entail?

A. They will introduce colour via new seats, planter boxes, street banners and public art elements along the road reserve, as well as painting of building façades.



Q. Will I have to change the outside of my building to comply?

A. In terms of having your building painted, you don't have to participate, but we strongly encourage it if you agree with Council's proposal. Once the colour palette has been finalised we envision there will be two palette choices, each with a range of colours. The painting of buildings will occur in stages, starting with a pilot project on buildings located on the eastern side of the Central Coast Highway between Toowoyn Bay Road and Thompson Street. Council will then develop a plan outlining the subsequent stages and proposed timeframe which will be made available publicly.



Q. Will I get a say in the colours outside my business?

A. Yes, within a range of proposed colour schemes which Council will be discussing with the business community and business directly involved. Once finalised, the colour schemes will also be detailed on Council's website.



Q. Will planter boxes be placed right outside my business?

A. Council will only install planter boxes outside a business where the owner has agreed to accept watering responsibilities. Planter boxes must also be placed so as to not obstruct pedestrian flow or cause a hazard to traffic in general.



Q. Will the changes affect parking in the area?

A. No, but there will be increased parking signage directing people to parking areas on side streets adjacent to the Central Coast Highway.

Q. How quickly will these changes come into effect?

A. Council has initiated purchase of materials for the implementation of the project. Works are due to start by the end of August 2012.

Q. Can you ensure the character of Long Jetty village will be maintained?

A. Our intention is to keep the area's building character intact, whilst creating a more vibrant and energetic atmosphere so that the area attracts more notice whilst retaining its own special character.

Q. Will I have to close my business while work is carried out?

A. No. There may be some minor disruptions during painting activities, with placement of scaffolding and parking disruptions for a short period of time. Council will stage the works to prevent major disruption and to allow for safety of pedestrians and the community in general. We will be communicating with shop owners in advance of any work starting so you can notify your customers and staff.

Q. If I have an idea for the outside of my business, who can I talk to?

A. Call Council's Urban Designer, Ana Lage on (02) 4350 1396.

Q. Is it going to cost me any money, or is Council footing the entire bill?

A. Council is financing the proposed initial works.

Q. What about upkeep of the work once it's completed. How often will that take place?

A. Council will be maintaining the street banners and they will be replaced at least every six months. However, ongoing maintenance of buildings that have been painted will be the responsibility of the building owner.

Q. Where will the public art be located?

A. Public art elements are proposed for larger public areas such as road reserves, road intersections and parks and there will be a community engagement process for the major public art installations.





What you need to know.....

To view the plans:

- Go to the old paint shop on the corner of McLachlan Avenue and the Central Coast Highway, next to the Balinese shop; or
- Visit our website www.wyong.nsw.gov.au and search on Long Jetty Improvement plans; or
- Contact Ana Lage, Urban Designer on (02) 4350 1396.

Council Civic Centre
2 Hely St Wyong | PO Box 20 Wyong NSW 2259
Open 8.30am - 5.00pm, Monday to Friday
E wsc@wyong.nsw.gov.au | T 4350 5555
General Manager Michael Whittaker



Wyong
Shire
Council

CENTRAL COAST